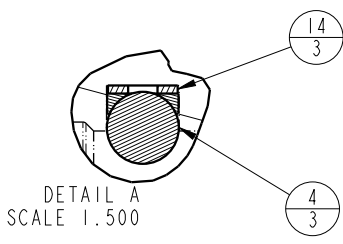
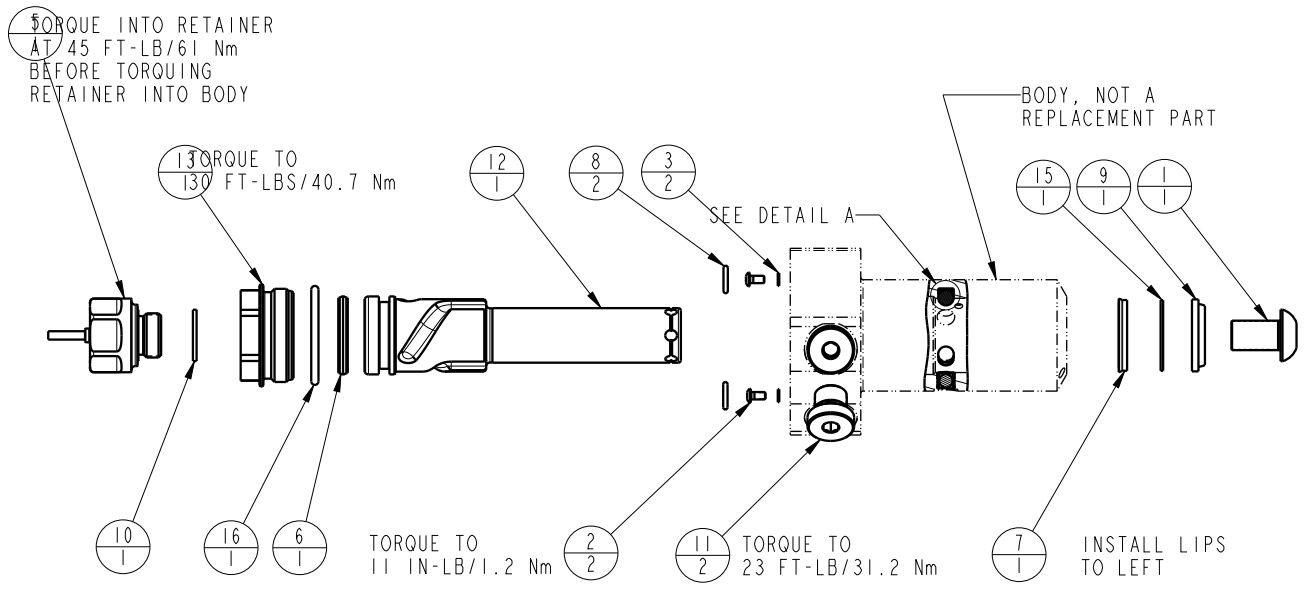



NO	QTY	PART NO	DESCRIPTION	STD SEAL KIT	FKM SEAL KIT
1	1	21500010	SCREW, CAP, BTNH, M12 X 20, ALY		
2	2	21500019	SCREW, CAP, BTNH, M3 X 6, ALY		
3	2	21500200	WASHER		
4	3	23600002	BALL, STEEL, ALLOY, .250	X	X
5	1	29740200	SENSOR, ULTRASONIC, M12, 1m		
6	1	39011030	SEAL,CROWN,1-1/16x1-1/4x5/32	X	39V11030
7	1	39011046	SEAL,BEVEL W/HEEL INSERT,7/8 x1/8 x1 1/8	X	39V11046
8	2	39050042	O-RING, (-011)	X	39051025
9	1	39053000	WIPER,SNAP-IN, (7/8)	X	X
10	1	43000040	O-RING, DIN3869, M18		43000041
11	2	43068006	PLUG, PORT, HOLLOW HEX, G1/4		
12	1	47510918	PLUNGER, SC, HS, 2600/11.6KN, LH, US		
13	1	81400082	RETAINER, SC, HS, 2600, US		
14	3	90199958	ASSY,BALLSEAT,SC,2600/5000	X	X
15	1	39F54002	BU RING,(-212 CUSTOM)	X	X
16	1	39V51043	O-RING, (-918)	X	X
N/A	N/A	60414504	KIT, SEAL, STANDARD	INCLUDED IN KIT	
N/A	N/A	6V414504	KIT, SEAL ,FKM		



<b>PARTS LIST</b>	 <b>VEKTEK</b> VEKTEK, INC. 1334 E. SIXTH AVE. P.O. BOX 625 EMPORIA, KS. 66801 U.S.A.
	<b>PARTS LIST, ASSY, SC, BF, TC, 11.6KN, DA, LH, US</b>
ASSEMBLIES AFFECTED 41421122US	SIZE A <b>MPL1453</b>
DATE: 2/5/25 DRAWING STATUS: <b>Released</b> PRODUCTION APPROVED FOR RELEASED STATUS ONLY	REV A

A	5660	RELEASE	ALS	3/24/25
REV	IN ACCORDANCE WITH ECN	EFFECTIVE DATE	REVISED BY	DATE
DRW BY:	ALS	DRAWING STATUS: <b>Released</b>		
DATE:	2/5/25	PRODUCTION APPROVED FOR RELEASED STATUS ONLY		

SHEET 1 OF 1